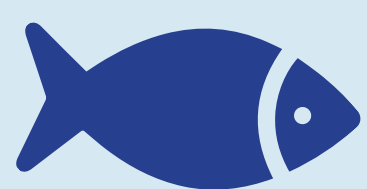
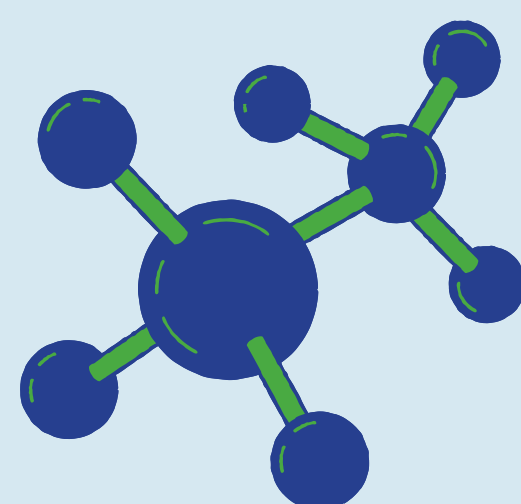


Thomson Reservoir Sediment Project

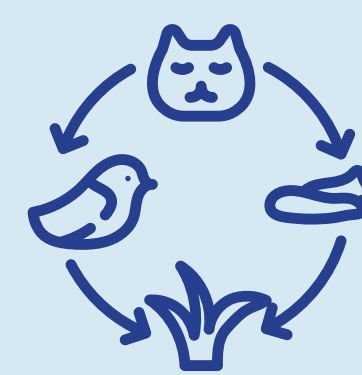
REMEDIATION METHOD



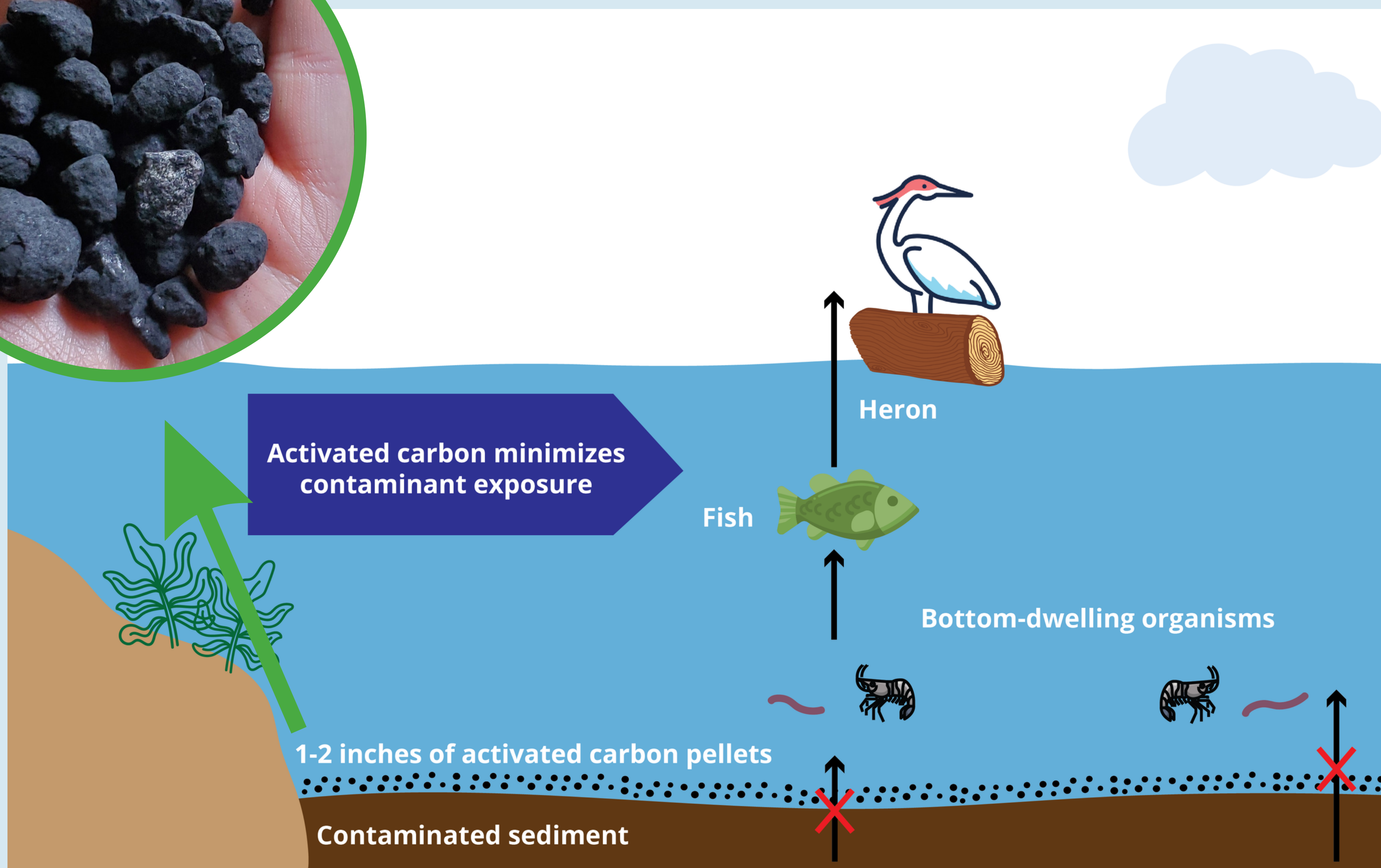
This project uses modern technology of applying 1-2 inches of activated carbon pellets over contaminated sediment to improve the aquatic environment for wildlife and the community.



The activated carbon rapidly binds to the contaminants in the sediment.



Applying activated carbon prevents contaminants from accumulating in bottom dwelling organisms and moving up the food chain.



Learn more:



Partners:



MINNESOTA POLLUTION CONTROL AGENCY



PotlatchDeltic



US Army Corps of Engineers