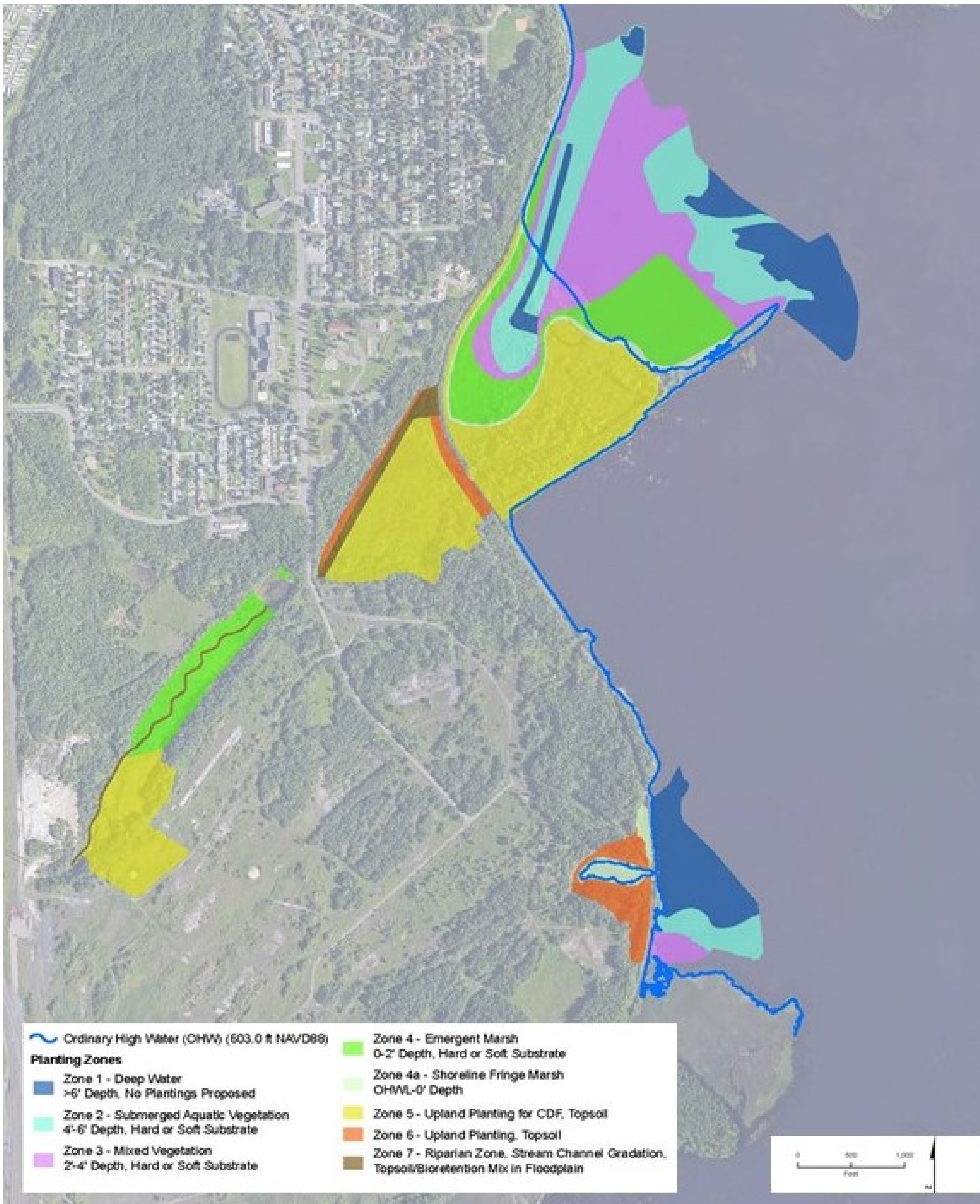


- Habitat enhancements include a new open-water area as a shallow sheltered bay habitat, deep-to-shallow-water transitions throughout the site, shoreline restoration through vegetation establishment, and creation of spawning areas and deep water habitat.
- Some enhancement has been started in the Unnamed Creek area. Plantings in Spirit Lake will occur after remediation is complete.



*Habitat design for the Spirit Lake Great Lakes Legacy Act Project includes aquatic and upland plantings to support a mosaic of habitat types for fish and aquatic species and wildlife.*



*Conceptual example- creating a shallow, sheltered bay allows for emergent vegetation and protected areas where such habitat is currently absent.*



*A conceptual example of a shallow, sheltered water area with emergent vegetation transitioning to a restored shoreline.*



*Unnamed Creek has been planted with riparian and emergent wetland species following remediation and rerouting in Summer and Fall 2021.*



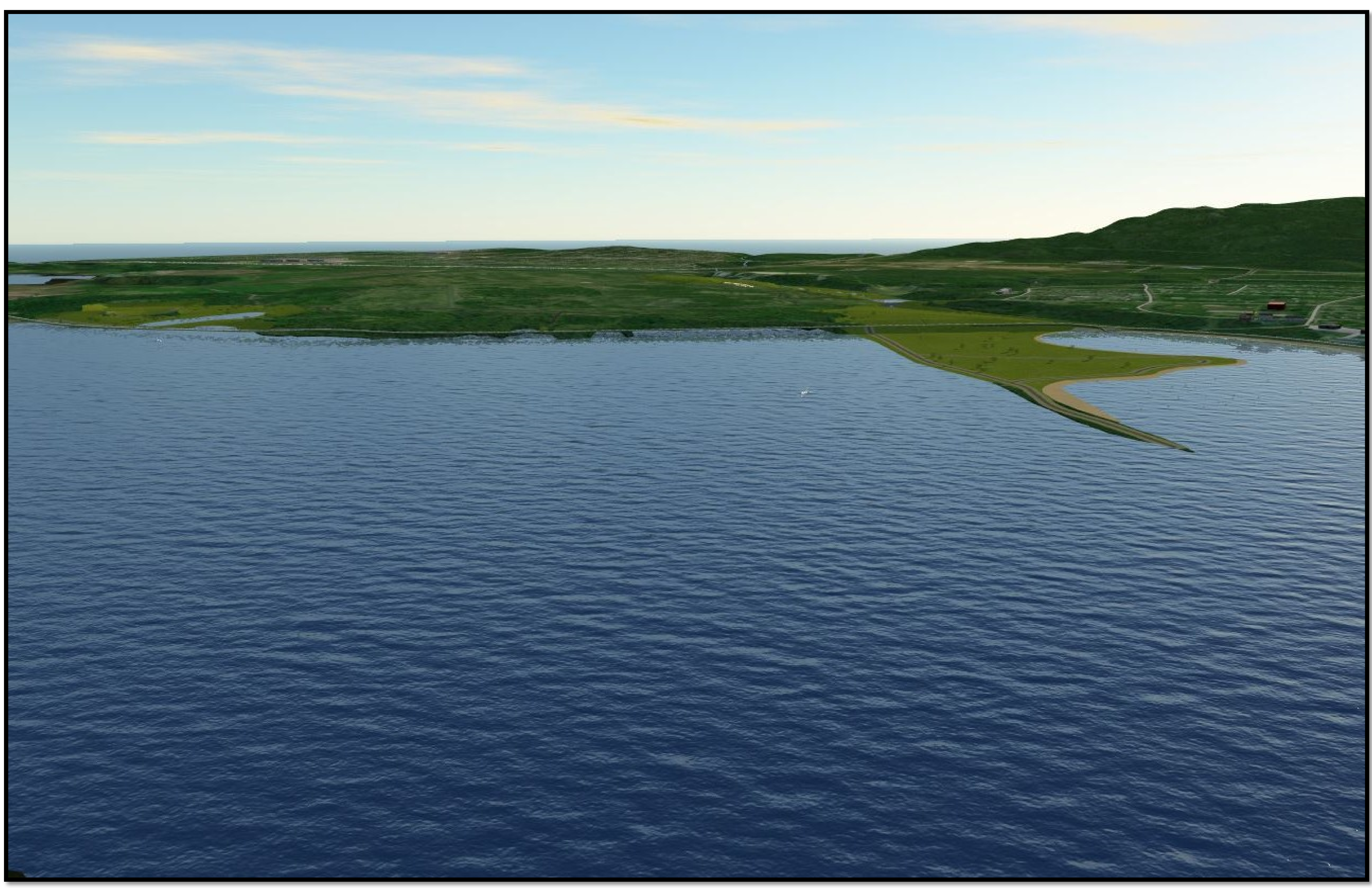
Source: U.S. Fish and Wildlife Service

*The habitat design includes a shallow vegetated spawning shelf to attract muskellunge to the new Shallow Sheltered Bay.*

These visualizations demonstrate what the project area will look like from different vantage points after construction and restoration are complete.



*View from Morgan Park (Hilton St.) south toward the new Shallow Sheltered Bay, Delta cap, and pedestrian trail.*



*View from Spirit Island west to the Unnamed Creek Delta and Wire Mill Delta shoreline.*