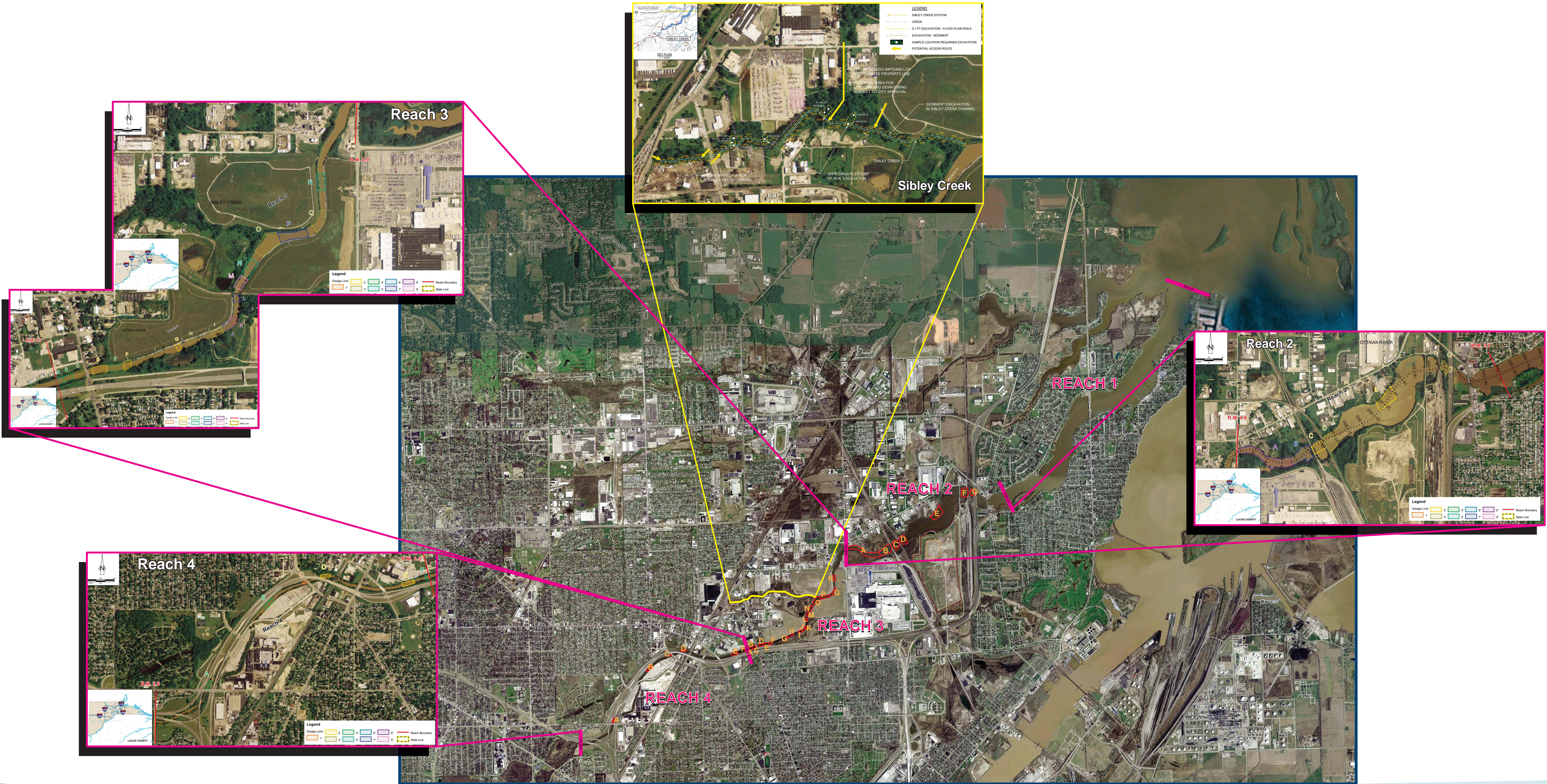




Ottawa River Great Lakes Legacy Act Project, Toledo, Ohio

# Ottawa River Remediation - Project Area

Ottawa River Group





# Project Partners, Costs, and Goals

## Partners



Great Lakes National Program Office

and

*Ottawa River  
Group*



## Costs

- \$49 Million
- 50/50 split between the U.S. EPA and the Ottawa River Group

## Goals

- 1: To remove approximately 250,000 cubic yards of sediment contaminated with PCBs, PAHs, and heavy metals from the river and creek
- 2: To reduce impacts to human health and the environment from the Ottawa River



# Dredging Activities



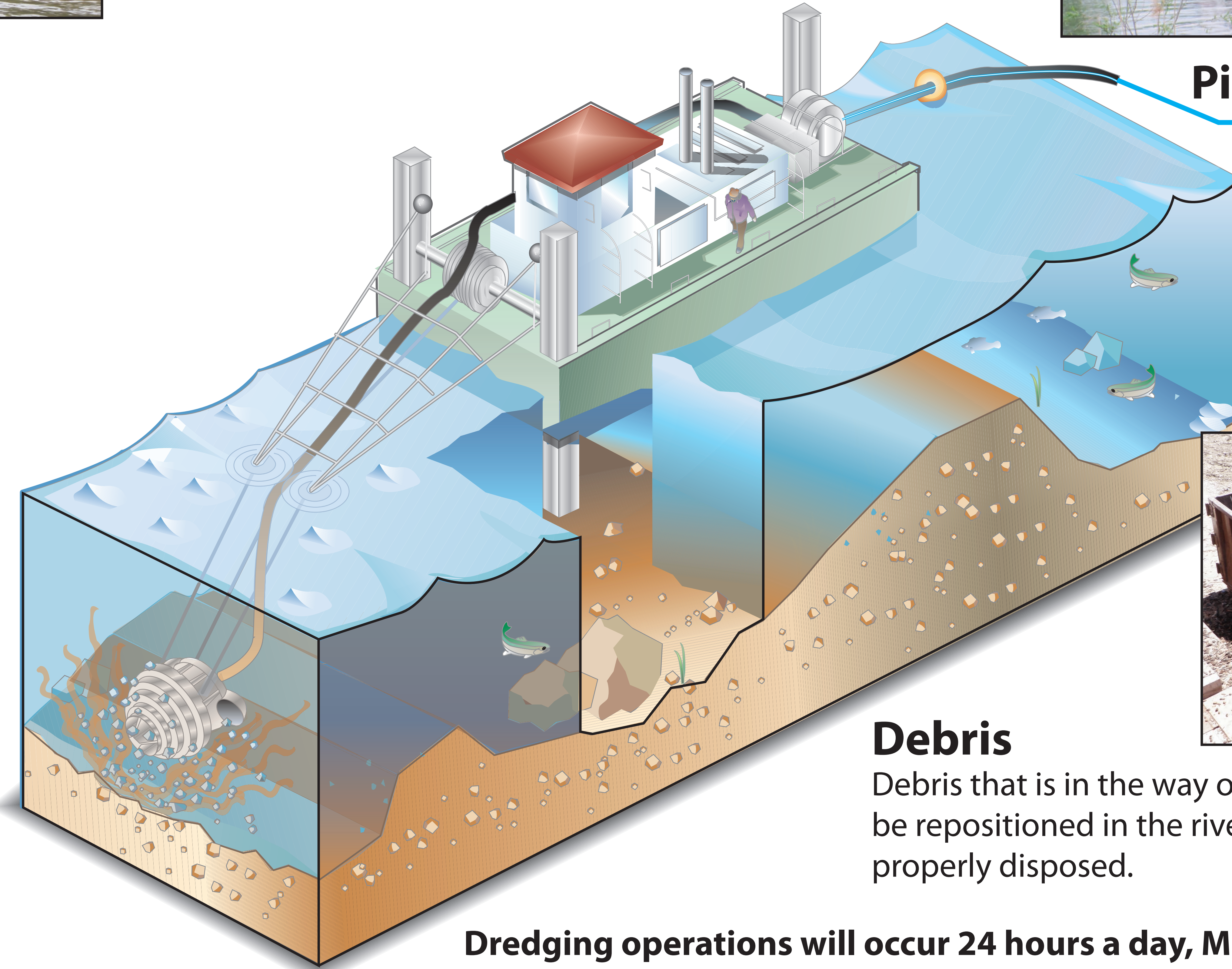
## Dredging Barge

The dredge will be able to remove between 18 and 24-inches of sediment with each pass. The depth of sediment removal has been predetermined based on previous sampling data and cleanup goals. Sediment samples will be collected following the completion of a dredged section to ensure the cleanup goals have been met.



## Dredging Head

As the dredging head spins, muddy water and sediment is sucked up, and sent to the onboard barge pump. The barge pump continues moving the sediment and water toward the intermediate pumps and eventually to the landfill.



Pipeline to Landfill



## Debris

Debris that is in the way of dredging operations will be repositioned in the river or removed and properly disposed.

**Dredging operations will occur 24 hours a day, Monday through Saturday**



Ottawa River Great Lakes Legacy Act Project, Toledo, Ohio

*Ottawa River Group*

# Project Timeline



**Landfill Preparation**  
Now through May 2010



**Survey**



**Dredging**

May through October 2010



**Dewatering/Water Treatment**  
May through December 2010

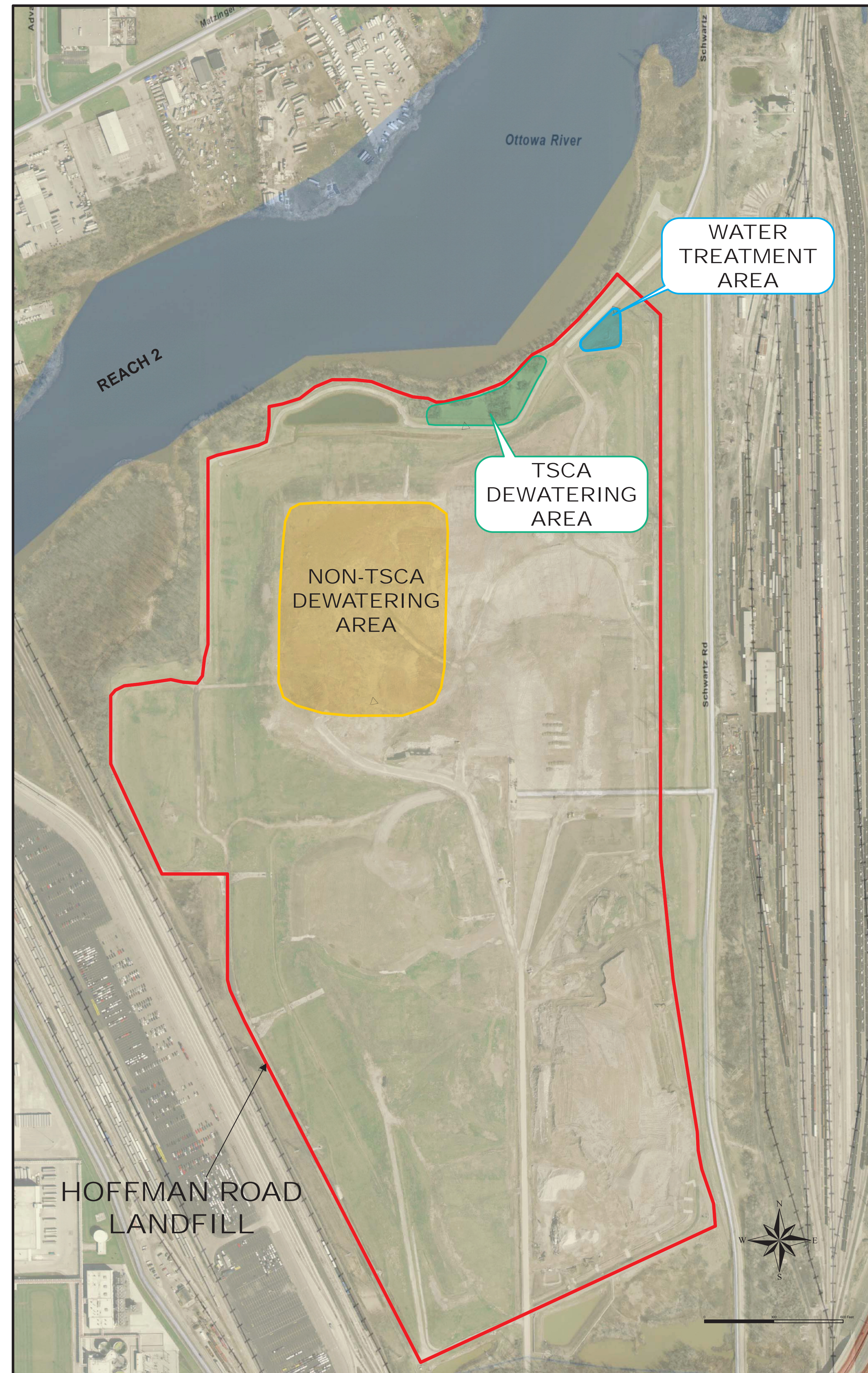


**Demobilization**  
December 2010



# Landfill Details

Pipeline from Dredging



TSCA = Toxic Substances Control Act



# The Great Lakes Legacy Act

## Goal:

Accelerate the pace of sediment remediation in U.S. Areas of Concern (AOCs)

## Mechanism:

Use partnerships as an innovative approach to conducting sediment remediation

## Great Lakes Areas of Concern

