

Spirit Lake Sediment Remediation Project - Morgan Park Community Meeting April 4, 2017



Welcome and Introductions

- USEPA - Great Lakes National Program Office
 - Illinois Indiana Sea Grant
 - EA Engineering, Science, and Technology, Inc., PBC
- U. S. Steel
- Minnesota Pollution Control Agency



Meeting Purpose

The goal of this meeting is to continue outreach with the Morgan Park community by:

- Providing an update on project status
- Informing the community about project goals and benefits
- Addressing current community questions and concerns
- Receiving feedback on community interest and issues

City of Duluth Planning Process

- City of Duluth is evaluating options for the Lake Superior and Mississippi Railroad in the Western Waterfront Trail Master Plan
 - Planning process is independent of Spirit Lake remediation project
- Questions regarding the City's plans for the waterfront in the project area should be directed to:
 - Lisa Luokkala, Project Coordinator (Parks and Recreation)
 - Contact: 411 West First Street - Ground Floor
Duluth, MN 55802
(218)-730-4312
 - Website: <http://www.duluthmn.gov/st-louis-river-corridor/western-waterfront-planning/>



Project Status

- Pre-design investigations are continuing through Spring/Summer 2017
- Remediation design beginning April/May 2017, completed in Spring 2018
- Contractor procurement for construction in Fall 2018
- Evaluation for potential impacts on cultural and historic resources under Section 106 is underway
- Focused project area habitat restoration planning initiated March 2017
- Project team meetings to receive stakeholder input will continue to be held during design
 - Morgan Park Community Club representative: Bill Majewski

Spirit Lake Site Background

- Spirit Lake is a culturally, historically, and recreationally significant area in the St. Louis River
- Heavy metal and PAH contamination exists from former industrial operations
- Cleanup plan initiated under the Great Lakes Legacy Act
USEPA GLNPO and U. S. Steel Partnership Agreement



What are the primary goals of the Spirit Lake Project?

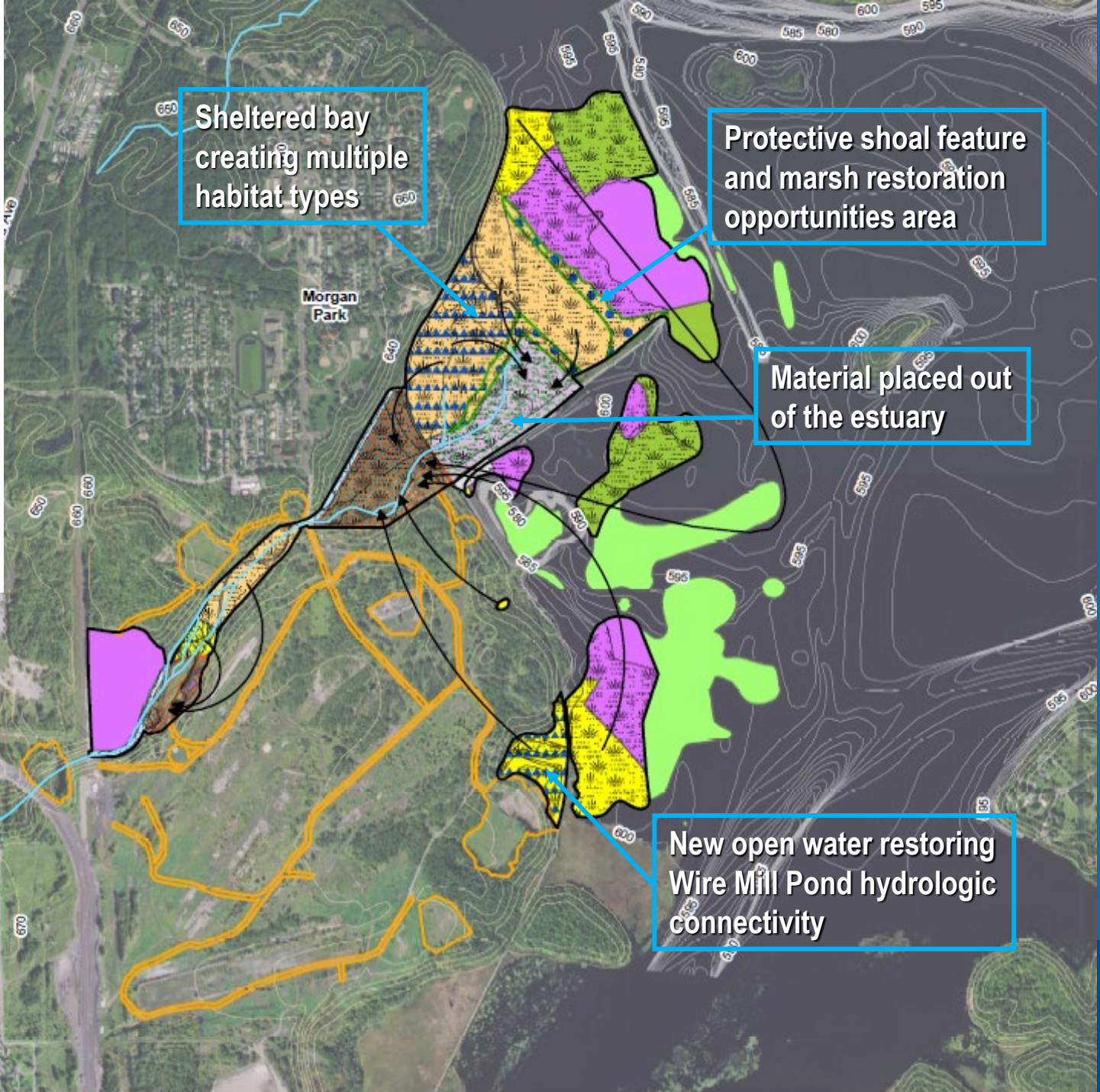
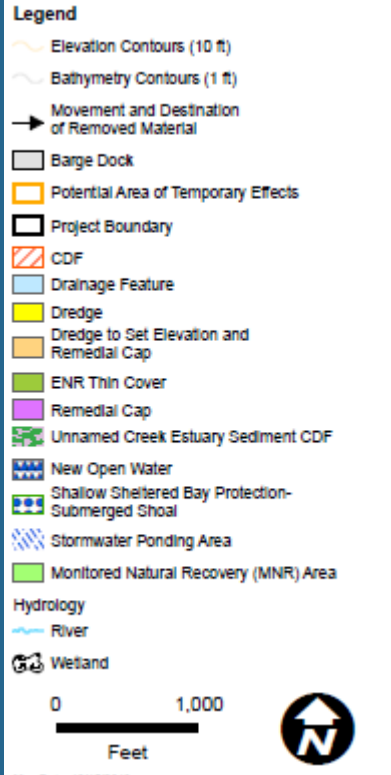
6

- Reduce ecological and human health risk in the project area
- Address beneficial use impairments in the Project area to support the delisting of the St. Louis River AOC
- Ecological betterment of the area through improvement of aquatic habitat



What are the major components of the cleanup?

- Cleanup plan was chosen from a set of options presented in the feasibility study; adapted to address stakeholder input
- Current proposed plan uses proven remedial technologies to remove contaminated sediment from Spirit Lake:
 - Dredging - removal of 697,000 cubic yards of material
 - Capping and thin cover – 132 acres
 - Creation of Confined Disposal Facilities
 - Monitored Natural Recovery areas
- Creation of habitat areas for fish and waterfowl; crucial to improving ecosystem of Spirit Lake



Project Design FAQs

- What input has been sought during the design process?
 - Public meeting held in August 2016.
 - Stakeholder meetings with state, local, and Tribal groups.
 - Public and stakeholder input is being incorporated into the cleanup plan where possible.
- Why is wetland habitat being removed from the delta area?
 - Sediments are currently contaminated and do not provide quality substrate for wetland species.
 - Sediments currently make the area inappropriate for human use.
 - Re-design of these areas and removal of the contaminated sediment will create a variety of habitats with water depths suitable to a wide range of organisms.



Project Design FAQs (cont' d)

- Will the remedy hold up to extreme weather events?
 - Data collected suggest that Spirit Lake sediment was stable during the 2012 flood.
 - Spirit Lake as a whole is a net deposition environment; during a storm, the area is covered by materials from upstream locations.
 - Modeling confirms the stability of the proposed CDF.
- Why isn't more material being considered for placement in one of the upland CDFs instead of the nearshore CDF?
 - Capacity limitations.
 - Optimize dredging volume.
 - Site redevelopment and access opportunities.

Conceptual Renderings from Vantage Points in Morgan Park

- GIS modeling was used to develop conceptual renderings
 - Images show sightlines to the project area from several vantage points in the Morgan Park neighborhood
- Note that in order to show a clear conceptual portrayal of the change in the view to the project area, some trees in the sightline at the vantage points had to be removed from the GIS model and therefore do not appear in the renderings.

Morgan Park Photo Location Overview

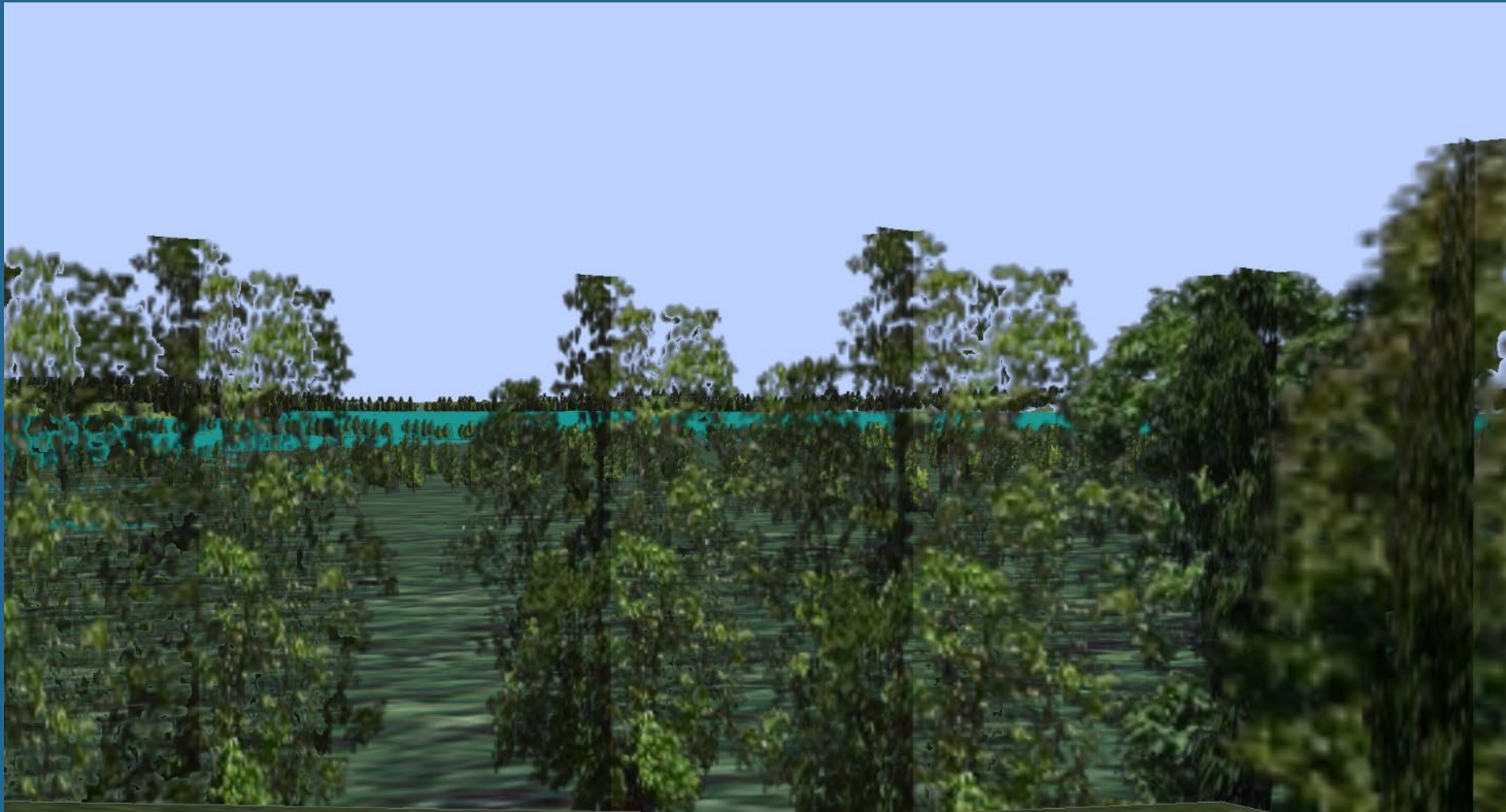


Photos from Morgan Park



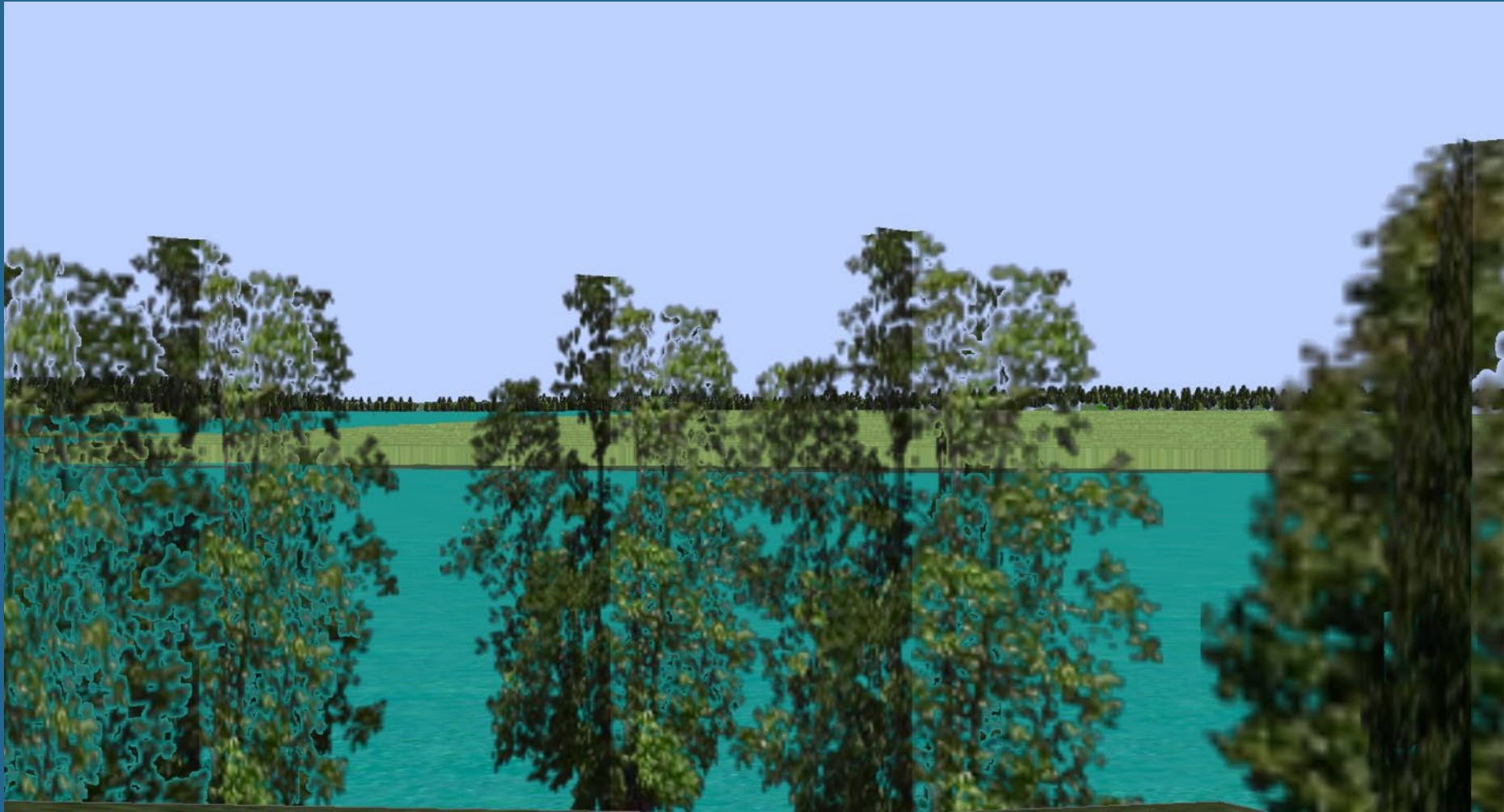
Note: Photos were taken from Observer Location on previous slide.

Morgan Park Photo Location Without Project



Note: Fewer trees are shown in rendering than are actually present at the vantage point.

Morgan Park Photo Location With Project



Note: Fewer trees are shown in rendering than are actually present at the vantage point.

Residence in Morgan Park Overview



Photos from Residence in Morgan Park



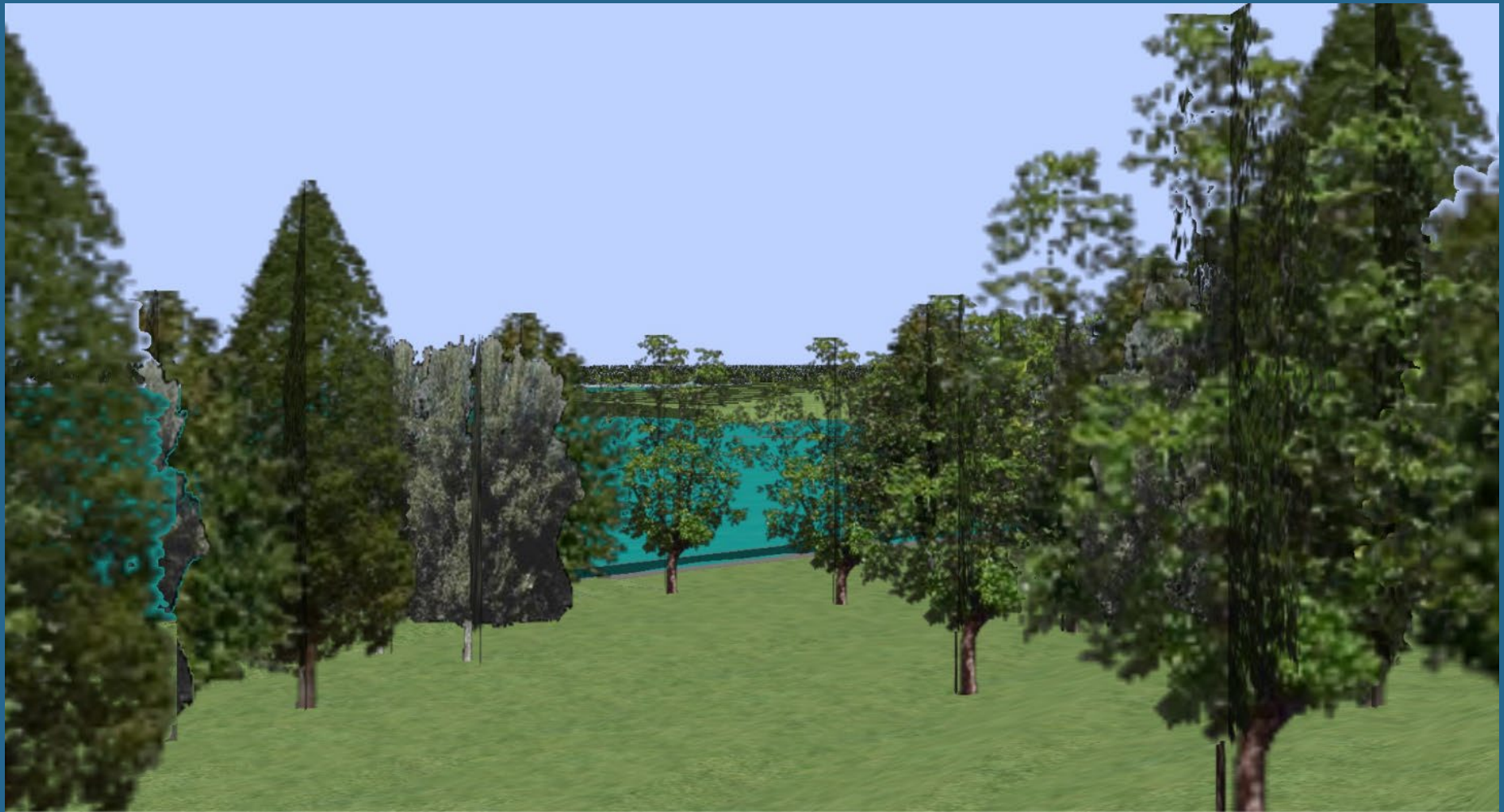
Note: Photos were taken from Observer Location on previous slide.

Residence in Morgan Park Without Project



Note: Fewer trees are shown in rendering than are actually present at the vantage point.

Residence in Morgan Park With Project



Note: Fewer trees are shown in rendering than are actually present at the vantage point.

What can Morgan Park residents expect during cleanup operations?

20

- Daily cleanup schedule
 - 12- or 24-hour work periods depending on the site location.
- Limiting construction noise, light, and smells
 - Mitigation equipment such as blinders and mufflers can be used.
 - Daytime schedule as much as possible near Morgan Park.
 - The project team is committed to keeping disturbances to a minimum.
- Air and Water Quality Considerations
 - Both will be monitored during construction.
 - Strategies to reduce suspended sediment and dust will be implemented.

What can Morgan Park residents expect during cleanup operations? (cont' d)

21

- Site Access and Local Road Integrity
 - Evaluating access routes.
 - Most material will be handled on-site, limiting truck traffic to equipment, supplies, etc.
 - If damages to local roads occur, they will be repaired according to City of Duluth and St. Louis County ordinances.
 - Other means of transporting materials will be evaluated in design, e.g., barging sand for capping areas.

What can Morgan Park residents expect after cleanup operations are complete?

- Wildlife community
 - Restoration will improve the wildlife habitat in the project area.
 - Temporary disturbance will result from the cleanup, but wildlife are generally resilient to this type of activity.
 - Expected to return to utilize the high-quality habitat created by the cleanup.
- Future Site Use
 - Key development location for many within the community.
 - Much of the site is currently private land owned by U. S. Steel - no current public access
 - Potential for future safe public use

Continuing Communication

- The project team will continue to communicate with Morgan Park residents throughout all phases of the Spirit Lake project
 - Mail/email notifications
 - Information sessions/meetings
 - Notification of document availability
 - Education sessions
- Project websites



Questions and comments?

Contacts:

Bill Murray (EPA-GLNPO)

Erin Endsley (MPCA)

Caitie Nigrelli (Sea Grant Liaison)

murray.williamj@epa.gov

erin.endsley@state.mn.us

cmccoy2@illinois.edu