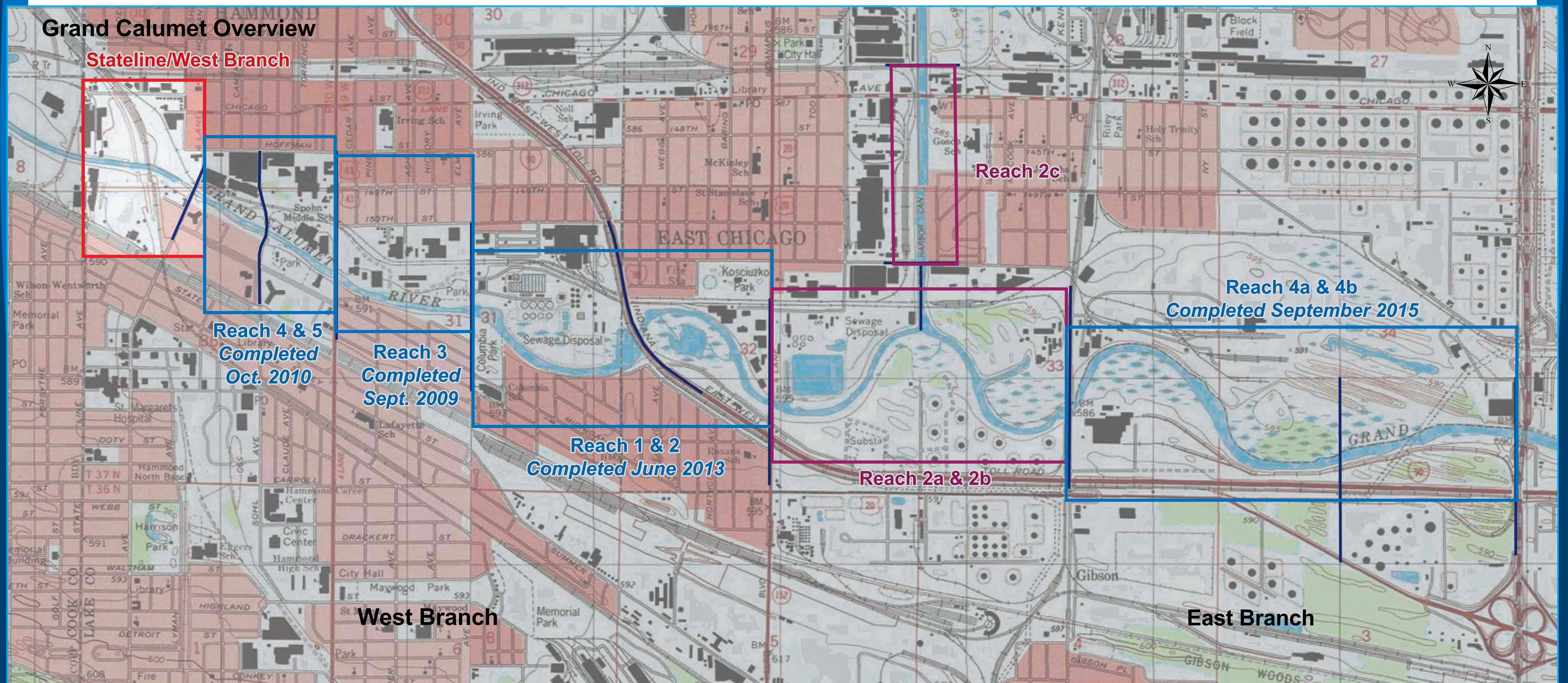




Stateline/West Branch Grand Calumet River, Hammond, Indiana

Great Lakes Legacy Act Sediment Remediation and Restoration Project

Jointly funded by the U.S. EPA, Indiana Department of Environmental Management (IDEM), Indiana Department of Natural Resources (IDNR), and the Northern Indiana Public Service Company (NIPSCO). This cleanup is the result of a partnership between the U.S. EPA, IDEM, IDNR, USFWS, NIPSCO, and the City of Hammond.



In progress
 Completed
 Not yet begun



Stateline/West Branch Grand Calumet River, Hammond, Indiana

Current Activities

Construct temporary dams to create work area for dry excavation

Install Sheetpile Dam



Install Super Sack Dam



Erect a temporary building where cap material will be mixed

Framing Temporary Structure



Temporary Structure



Install a temporary water treatment plant

Water Treatment Plant



Construct temporary access roads and sediment processing areas





Stateline/West Branch Grand Calumet River, Hammond, Indiana

Future Activities

Dry Excavation



Sediment Loading

Loading Truck for Off-Site Disposal



Washing Truck Before Leaving Site

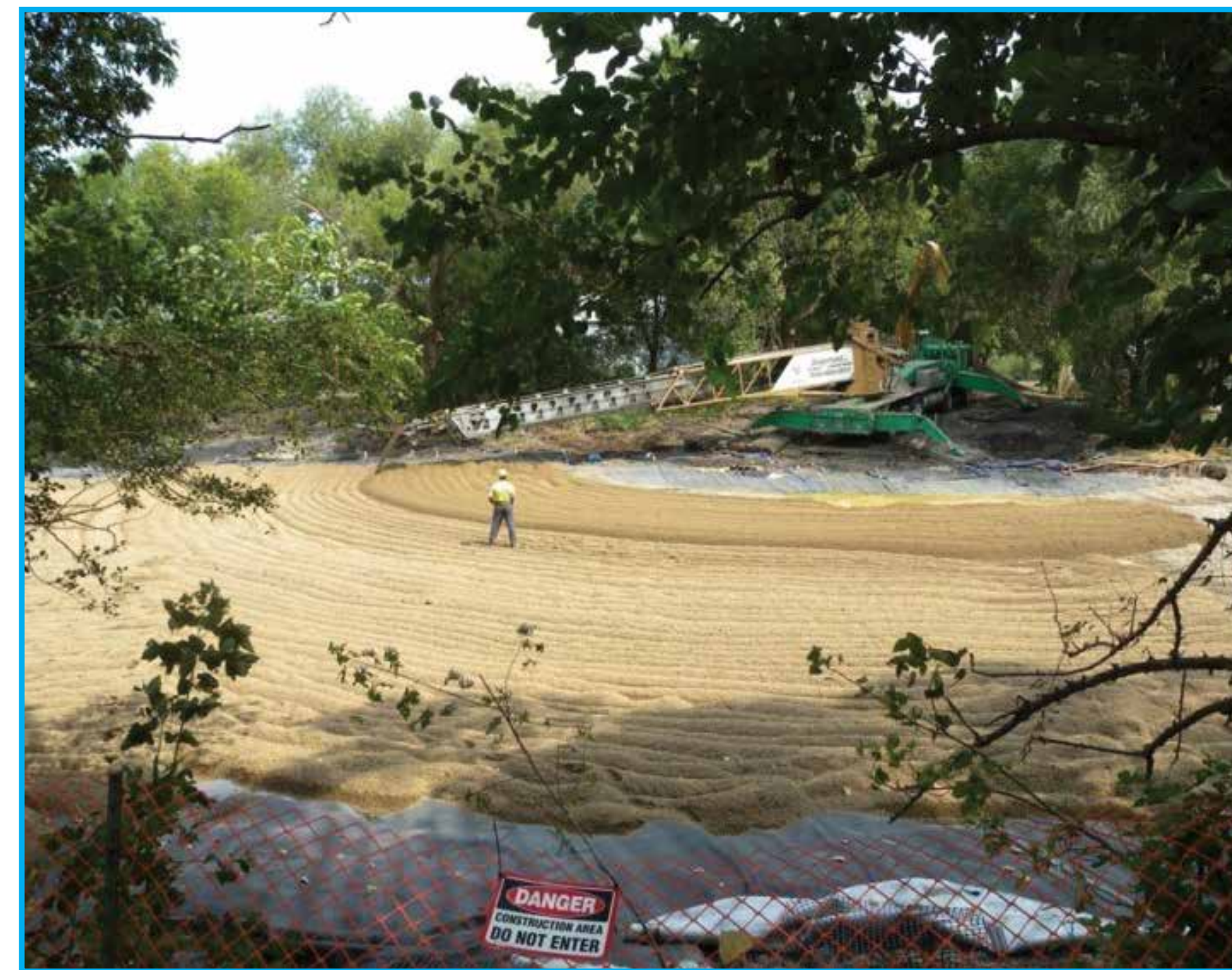


Capping

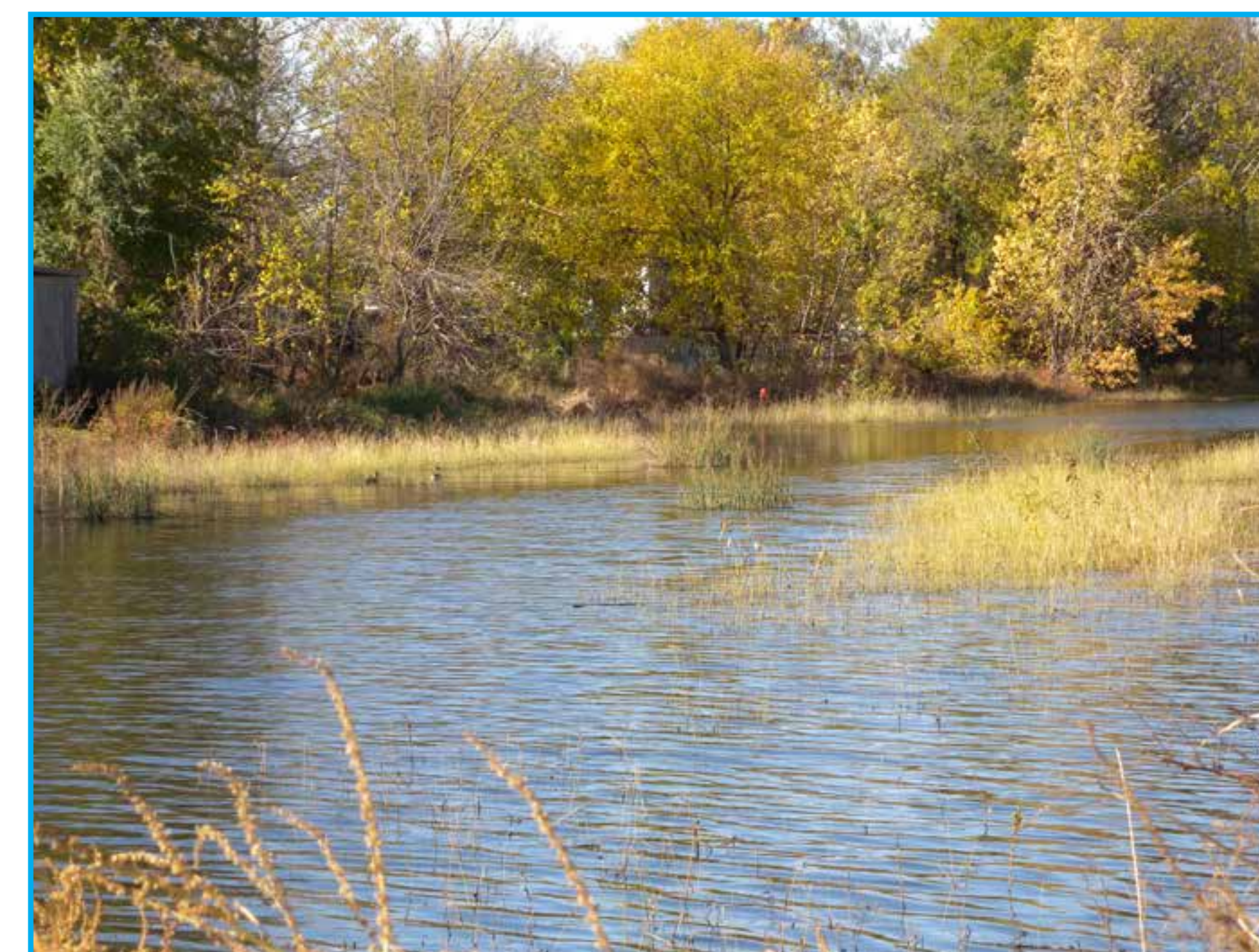
Blending Cap Material



Installing Cap



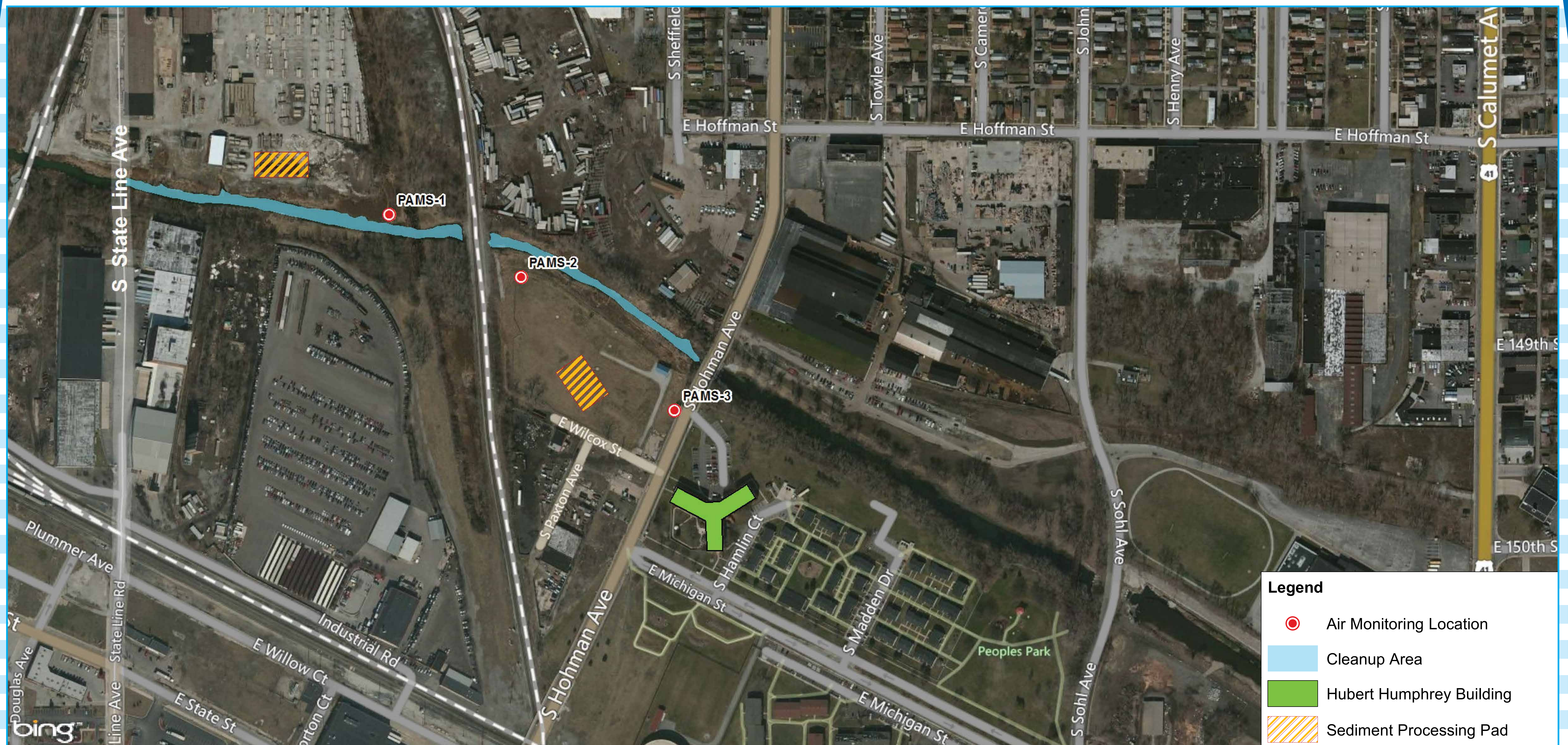
Restoration





Stateline/West Branch Grand Calumet River, Hammond, Indiana

Air Monitoring



The air sampling locations shown on the map above have been selected to measure air concentrations at the project perimeter and in areas where contaminated sediment is handled and processed.

Real-time monitoring



- Performed around active work areas
- Provides instantaneous readings of dust and organic vapor levels
- Construction activities adjusted or changed if readings exceed acceptable levels

Fixed location monitoring



- Collect air samples over daily work shift
- Reported air concentrations for individual chemicals
- Results provide a more complete picture of longer-term air impacts from construction

Odor control system

- Implemented as needed based on odor levels at the site





Stateline/West Branch Grand Calumet River, Hammond, Indiana

Truck Routes

Capping materials mixing area to Cleanup Area (Blue) and Return (Red)



Overview of Cleanup Area from Site to Expressway

