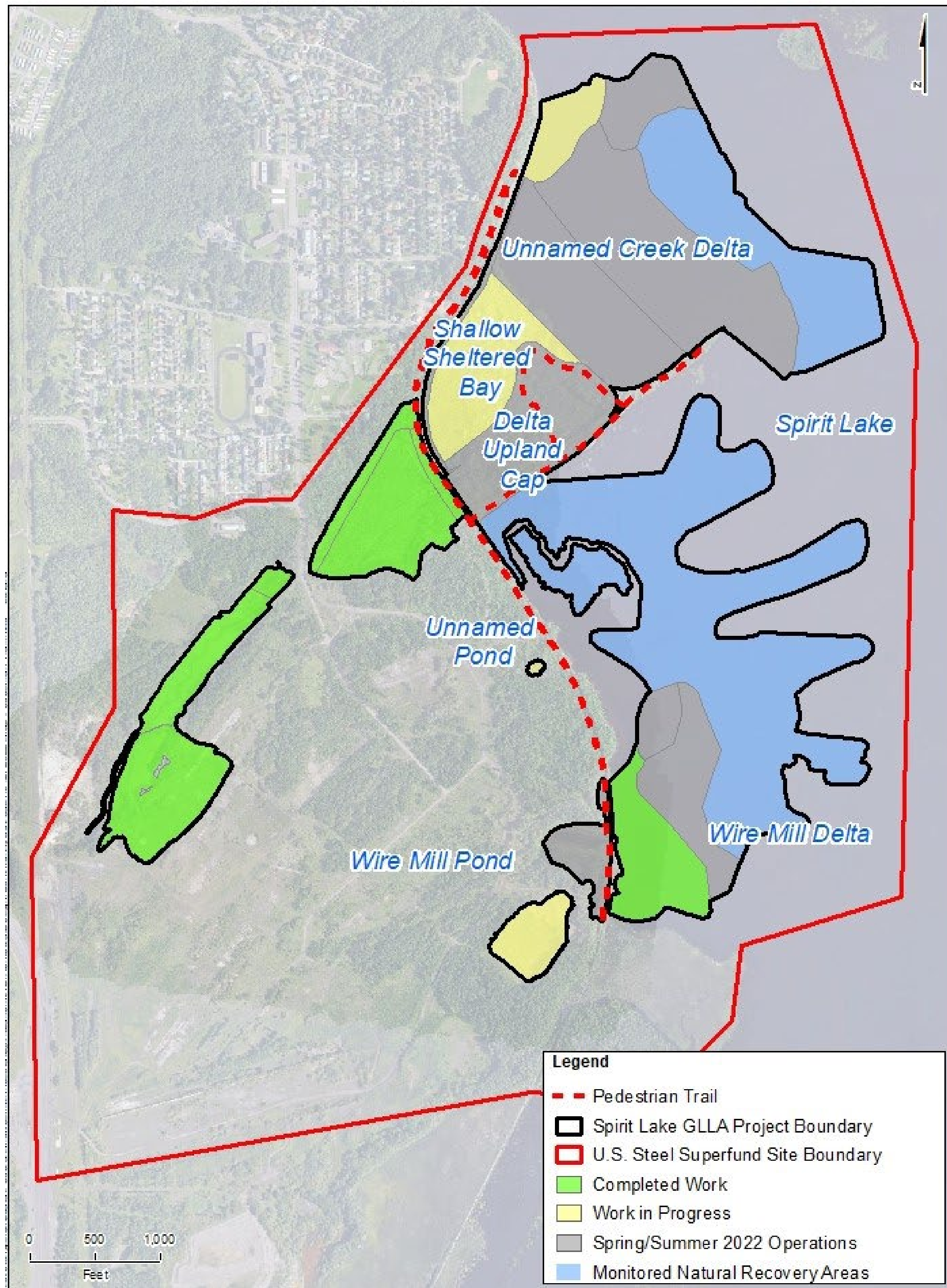


The project will include the creation of a pedestrian trail and access to greenspaces along the river, including water access and viewing locations. Conceptual photos are shown below.



Pedestrian walking and biking trail alignment



Conceptual example- Shoreline access and canoe/kayak landing.



Conceptual example- pedestrian walking and biking trail.



Conceptual example- Interpretative signage along trails.



Conceptual rendering of view of the pedestrian trail and Shallow Sheltered Bay post-construction